

Sept 12-1899,

Tuesday

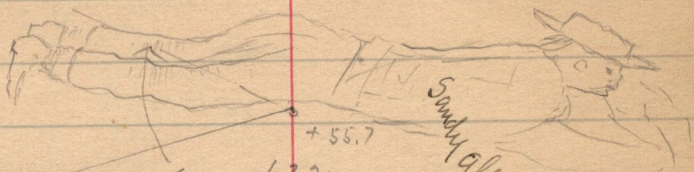
approx 14.2

to N.E. river
House

0 + 02.1
634

575.
approx Tp. line 2677
ent. Tp. S. 15 + 16, S
R. 29 E.

approx 14.2



Sandy alfalfa

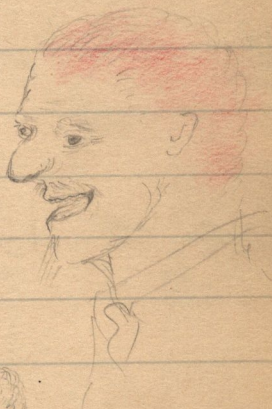
Armed Butter

oxman asleep on
the line

to supposed
Civ. Soc 532-33
on S. body Tp. 15
S.R. 39 E.
88° 34'
87° 49'

which is a mound
with 4 pits N.E., N.W., S.E. & S.W.
nearly obliterated
No good.

6310



Say! This damn ditch dont go high
enough to suit me. →

